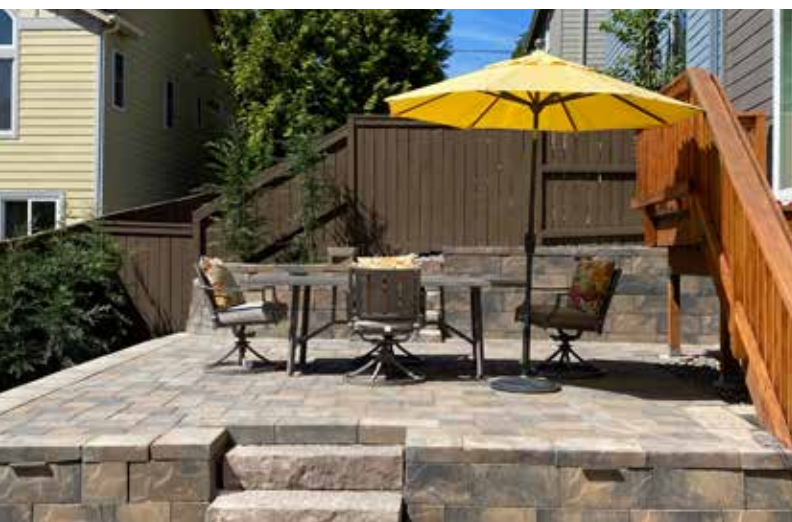




**OREGON
BLOCK**
BLOCK & PAVER MANUFACTURING

OregonBlock.com

1763 NW Gardner Rd. Prineville, OR 97754 / 541.447.6869





CONTENTS

04

Pavers

Ashlar Pavers
Fieldstone Pavers
Europa Pavers
Paver Sizes
Paver Layout Patterns
Paver Installation

24

Retaining Walls

AB® Collection
AB Aztec™ Collection
AB Europa® Collection
AB Metro Collection

50

Seating Walls

AB Courtyard Collection
AB Metro™ Patio Wall

58

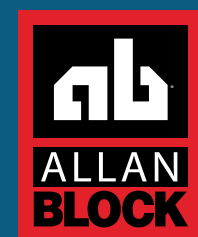
Other

Planning Support
Frequently Asked Questions

We are a third-generation family-owned and operated business located in Prineville, Oregon. Since 1999, we have manufactured Allan block retaining wall products.

In 2013, we added our own paver line—rounding out our hardscape product offerings and complimenting the Allan block retaining wall system. We continue to strive to add new products and color/style choices to meet your needs and wants as the hardscape market continues to evolve.

Oregon Block and Paver Manufacturing is dedicated to producing the highest quality products with the most superior customer service.



allanblock.com



Oregon Block & Paver is a licensed manufacturer of Allan Block products. For more information on licenses and manufacturing information, visit www.allanblock.com.



MIKE WESTON
Owner and President

Mike takes great pride in having a hand in every aspect of business and working side by side with his employees and family day in and day out.

Additional roles: Machine Operator, Production Manager, Fabricator, Maintenance Man, Team Motivator



TRACY WESTON
Central Oregon Sales

Tracy has played a supporting role in the background for 20+ years before coming on board full time in July 2020 to help grow the business and maybe let Carol retire for good this time.

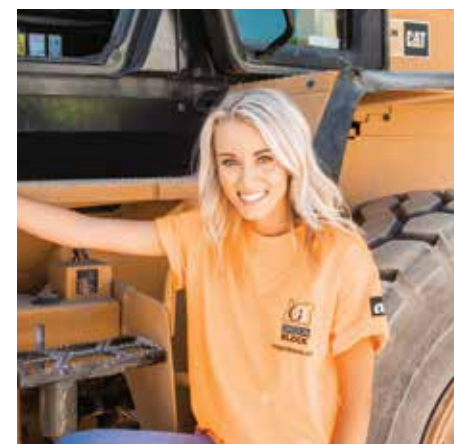
Additional roles: Quality control, truck dispatching, HR, safety, payroll, lunch lady



CAROL WESTON LYNCH
Owner / Secretary-Treasurer

Carol inherited this job as a second career after she retired. She has found great joy in seeing her family succeed.

Additional roles: Accounts Payable/Receivable, Employee Onboarding, Trucking Business Manager, Conflict Resolution Specialist



KATY WESTON
Eastern/Southern Oregon Sales

Katy started out at 15 years old driving forklift in the summers. After graduation she worked for others to gain experience before coming on board full time to do outside sales.

Additional roles: Social Media/advertising, Loader/forklift operator, Quality control, bookkeeping



TANNER WESTON
Portland / SW Washington Sales Manager

Since Tanner was 4 years old, he has had the block business in his blood. He started out as a laborer and forklift driver until he was promoted to be our Portland-based Sales Manager.

Additional roles: Engineer and Contractor Certified Trainer, Landscape and Commercial Job go-to Guy, Web Design, Social Media, Estimator



MATT WESTON
Production Assistant

Matt started working summers at 12 years old driving forklift and laborer work. Matt has continued to show great promise in keeping up with technology as we continue to automate a lot of our machinery.

Additional roles: Forklift/loader operator, wrap machine technician, onsite welder, quality control, team leader



CLYDE WESTON
Door Greeter and Site Security

Since December 2021 Clyde has been a huge asset to the team not only does he greet every customer and vendor he quality checks our raw materials multiple times a day.

Additional roles: Lunch tester, hugger and willing to let anyone pet him at all times.

Create the patio, driveway, or walkway you've always wanted with Oregon Block Pavers.



Give your patio or walkway a beautiful and unique design by mixing and matching pavers from Oregon Block's high quality product lines. The versatility of pavers lets you create one-of-a-kind patterns, curves and lines that you cannot get from concrete alone. Find your perfect blend today from the pavers in our Ashlar, Fieldstone and Europa product lines.

Ashlar Pavers

Smooth topped paver with straight lines for a classic paver look.

Fieldstone Pavers

Textured for a slate stamped look.

Europa Pavers

Tumbled style pavers to create a weathered look.



Elegant & Classic

Ashlar pavers combine straight lines and smooth surfaces to deliver a timeless appeal to your outdoor living space.

This style of paver has set the standard for hundreds of years and continues to be a popular choice today.

Oregon Block's forever-strong Ashlar pavers provide long-lasting durability and their classic straight lines and smooth top give your project a look that will never go out of style.



PAVER A
SIZE: 5.5" x 2.75" x 2.375"
COVERAGE: 9.52 per sq ft



PAVER D
SIZE: 8.25" x 8.25" x 2.375"
COVERAGE: 2.11 per sq ft



PAVER B
SIZE: 5.5" x 5.5" x 2.375"
COVERAGE: 4.76 per sq ft



PAVER E
SIZE: 11" x 8.25" x 2.375"
COVERAGE: 1.58 per sq ft



PAVER C
SIZE: 8.25" x 5.5" x 2.375"
COVERAGE: 3.17 per sq ft



PAVER F
SIZE: 12.375" x 8.25" x 2.375"
COVERAGE: 1.41 per sq ft



St. Helens Blend



Rocky Mt. Blend



Cascade Blend



Rose City Blend
Only available in size B and C



Charcoal
Only available in size C



Color: Rocky Mt Blend - Pattern: NW Blend

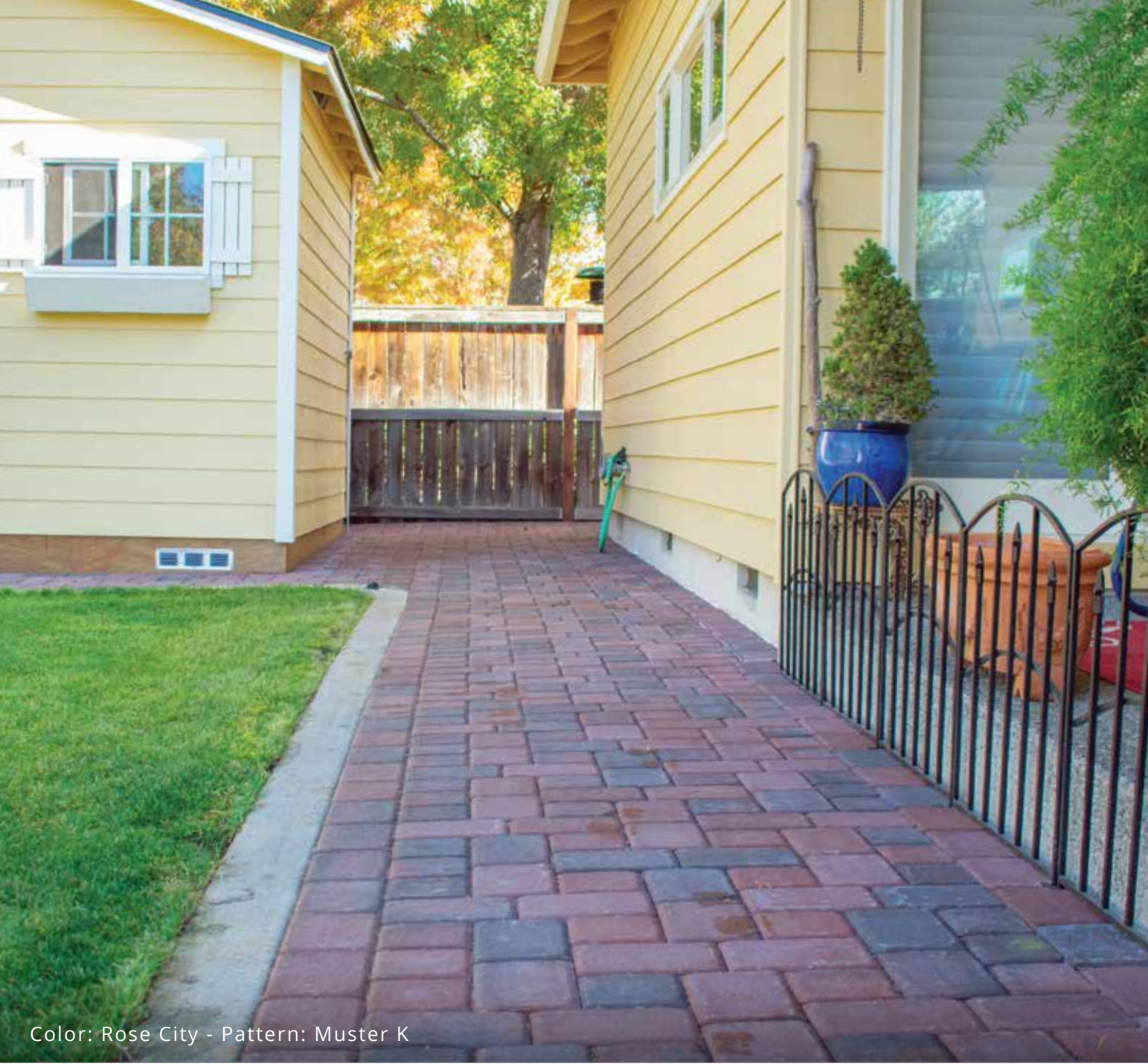


Color: Cascade Blend Pattern: Muster K


Ashlar Pavers



A CLASSIC
LOOK
FOR ANY
LANDSCAPE



Color: Rose City - Pattern: Muster K

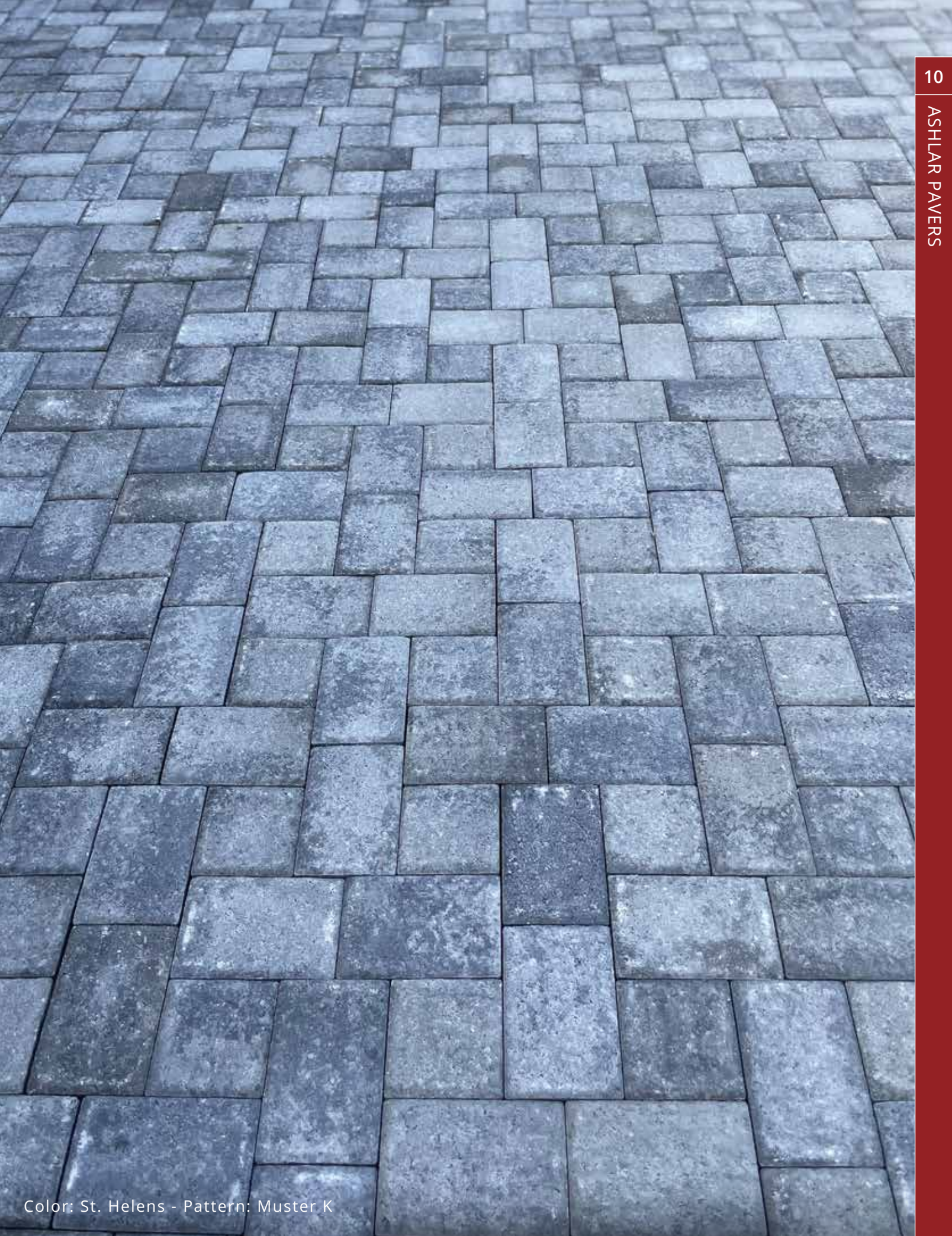


Color: St. Helens - Pattern: Muster K

Color: Cascade Blend - Pattern: Muster K



Color: Cascade Blend - Pattern: Muster K



Color: St. Helens - Pattern: Muster K



Color: St. Helens - Pattern: NW Blend

Fieldstone Pavers

Natural Texture

Fieldstone pavers add texture and sophistication to standard pavers, giving a natural, rustic slate look to your project. If you're looking for a more complex and varied design, their contemporary appeal may fit your lifestyle perfectly.



PAVER A
SIZE: 5.5" x 2.75" x 2.375"
COVERAGE: 9.52 per sq ft



PAVER D
SIZE: 8.25" x 8.25" x 2.375"
COVERAGE: 2.11 per sq ft



PAVER B
SIZE: 5.5" x 5.5" x 2.375"
COVERAGE: 4.76 per sq ft



PAVER E
SIZE: 11" x 8.25" x 2.375"
COVERAGE: 1.58 per sq ft



PAVER C
SIZE: 8.25" x 5.5" x 2.375"
COVERAGE: 3.17 per sq ft



PAVER F
SIZE: 12.375" x 8.25" x 2.375"
COVERAGE: 1.41 per sq ft



St. Helens Blend



Rocky Mt. Blend



Cascade Blend



Color: Rocky Mt. - Pattern: Muster K

Photos may not represent exact color of products. Please see samples at your local dealer before purchasing.



Color: St. Helens - Pattern: Muster K



Color: St. Helens - Pattern: Muster K



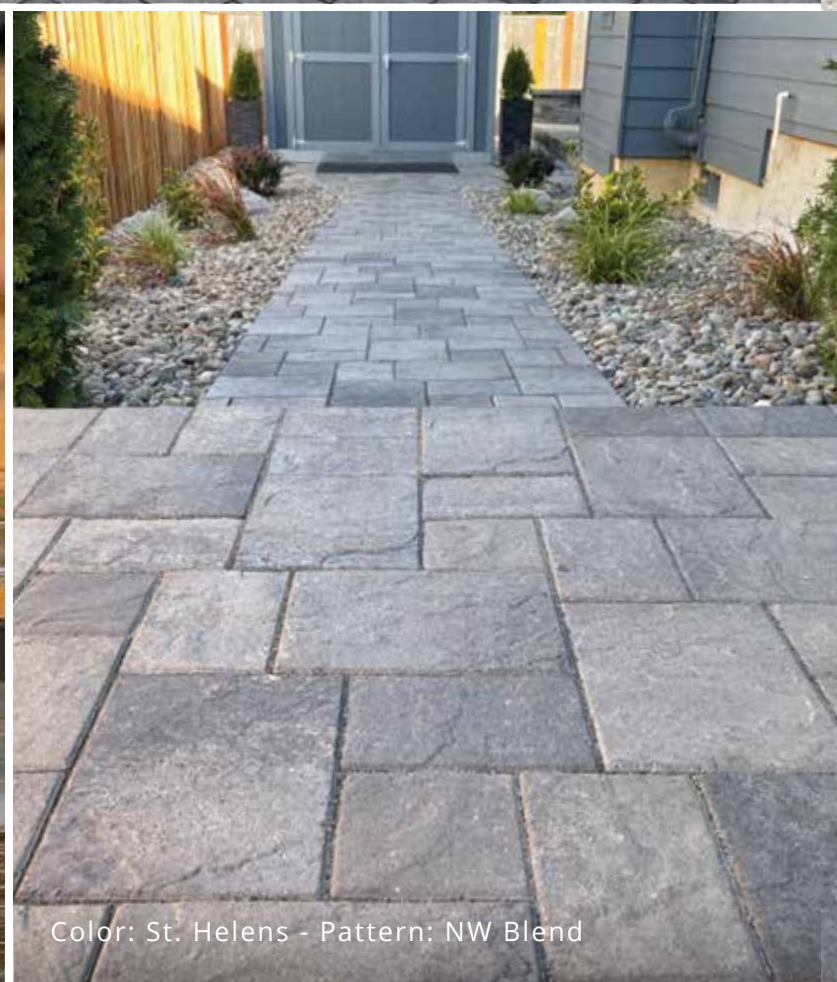
Color: Rocky Mt. - Pattern: Muster K



Color: St. Helens - Pattern: Muster K



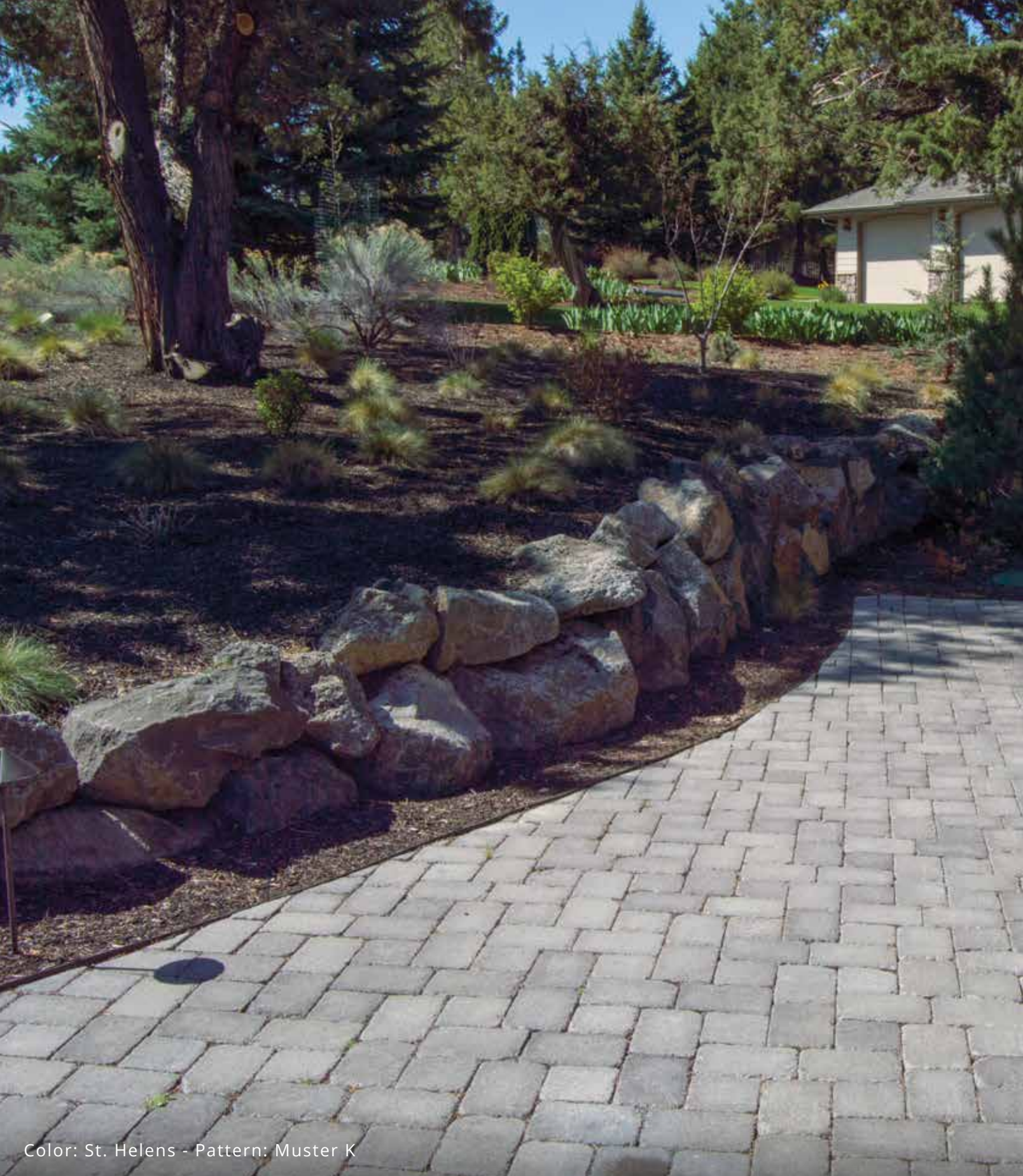
Color: Rocky Mt. - Pattern: Muster K



Color: St. Helens - Pattern: NW Blend



Color: St. Helens - Pattern: Muster K



Color: St. Helens - Pattern: Muster K

Old World Style

Europa tumbled-style pavers add European style to your outdoor living area. Their naturally weathered appearance and rounded edges give your patio or walkway old world charm without sacrificing the high quality and durability of our other product lines.



PAVER A
SIZE: 5.5" x 2.75" x 2.375"
COVERAGE: 9.52 per sq ft



PAVER C
SIZE: 8.25" x 5.5" x 2.375"
COVERAGE: 3.17 per sq ft



PAVER B
SIZE: 5.5" x 5.5" x 2.375"
COVERAGE: 4.76 per sq ft



St. Helens Blend



Rocky Mt. Blend



Cascade Blend



Color: Rocky Mt. - Pattern: Random 3 Piece

Europa Pavers

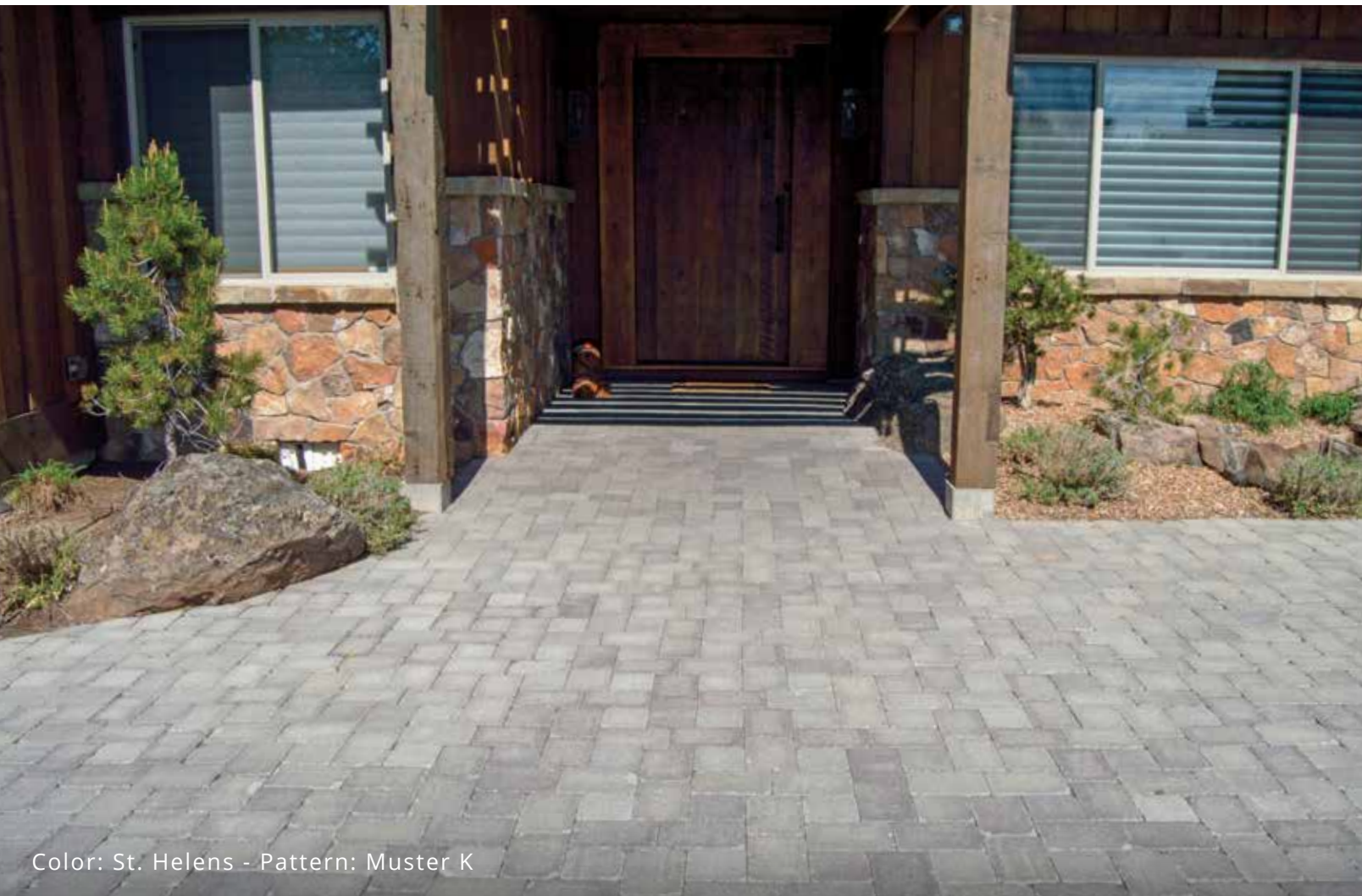
Photos may not represent exact color of products. Please see samples at your local dealer before purchasing.



Color: St. Helens - Pattern: Muster K

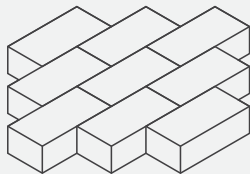


Color: Rocky Mt. - Pattern: Muster K



Color: St. Helens - Pattern: Muster K





Paver Patterns

Pavers provide design versatility and flexibility that you can never achieve with concrete. With pavers, you can create a unique custom design using patterns, curves and lines--the only limit is your creativity. All our lines of pavers come in standard sizes and can be mixed and matched for an elegant look. Below are just a few examples of our most popular patten choices. A diverse selection, can be found on our website.

Oregon Block & Paver Manufacturing is happy to work with you to determine the right blend of colors and shapes to plan and complete your outdoor space. Contact us today to start planning!

City Center
Percentage Used
A-12.12% / B-24.24% / C-36.37% / F-27.27%

Columbia Villa
Percentage Used
B-14% / C-43% / E-43%

Running Bond
Percentage Used
C, E, or F-100%

NW Blend
Percentage Used
C-33% / E-67%

Muster K
Percentage Used
B-27% / C-73% or D-27% / F-27%

Hopscotch
Percentage Used
B-33% / D-67%

PAVER A
SIZE: 5.5" x 2.75" x 2.375"
COVERAGE: 9.52 per sq ft

PAVER D
SIZE: 8.25" x 8.25" x 2.375"
COVERAGE: 2.11 per sq ft

PAVER B
SIZE: 5.5" x 5.5" x 2.375"
COVERAGE: 4.76 per sq ft

PAVER E
SIZE: 11" x 8.25" x 2.375"
COVERAGE: 1.58 per sq ft

PAVER C
SIZE: 8.25" x 5.5" x 2.375"
COVERAGE: 3.17 per sq ft

PAVER F
SIZE: 12.375" x 8.25" x 2.375"
COVERAGE: 1.41 per sq ft

Europa is only available in A, B, & C

Paver Installation

Site Preparation

Remove all existing pavement, turf, or soil to the proper depth. For installation on a compacted aggregate base and soil subgrade, the top surface of the pavers may be 1/8" to 1/4" above the final elevation after compaction to compensate for minor settling. Proper depth will be the finished surface, less paver thickness, setting bed depth, and base material. Base thickness ranges from 6" to 12." A base for vehicular traffic is 10" to 12." In extreme soil or other conditions, the base can be up to 18" deep. Verify that subgrade preparation, compacted density, and elevations conform to the specifications.

Paver Base

After the grade is the proper level, the subgrade must be compacted. If the subgrade is clay, compaction is done with a roller or rammer. For sandy soils, a vibraplate can be used. Compact the subgrade to at least 95% Standard Proctor Density. Higher density or compaction to ASTM D1557 may be necessary for areas subject to vehicle traffic. Stabilization of the subgrade material might be necessary with weak or saturated soils. Spread and compact the base in 4"-to-6" lifts using a compactor. Base material should be a granular type that compacts easily. Have an engineer determine the base thickness required for the particular application.

Border Restraints

Install border restraints on the base material and secure with steel spikes to hold the restraints in place. Edge restraints provide lateral resistance to loads and maintain an interlock of the paving units. Set edge restraints at the correct level, especially if the tops of the restraints are used for screeding the bedding sand.

Paver Sand

Spread washed concrete sand evenly over the base course and screed to 1" to 1-1/2" thickness. Bedding sand (concrete sand) should conform to ASTM C33. Do not disturb the screeded sand.

Install Pavers

Lay pavers in the pattern shown on the drawings on the following pages. Use string or chalk lines to maintain straight lines. Some pavers are made with spacer bars on each unit to insure a minimum joint between each unit. Spacer bars help prevent contact with adjacent pavers and spalling.

Edging

Fill gaps at the edge of paved areas with cut pavers or edge units. Any units placed along edges that are subject to vehicle traffic should be cut no smaller than 1/3 of a whole paver. Cut pavers using a double-blade paver splitter or masonry saw.

Compacting

After pavers are placed, use a low-amp, high-frequency plate compactor to compact the bedding sand, seat the pavers, and force the bedding sand into the joints at the bottom of the pavers. Warning, pavers with a rough profiles tops like the Fieldstone finish are vulnerable to scuff marks and damage caused by plate compactors. We recommend using a protective medium between the compactor and the paving stones.

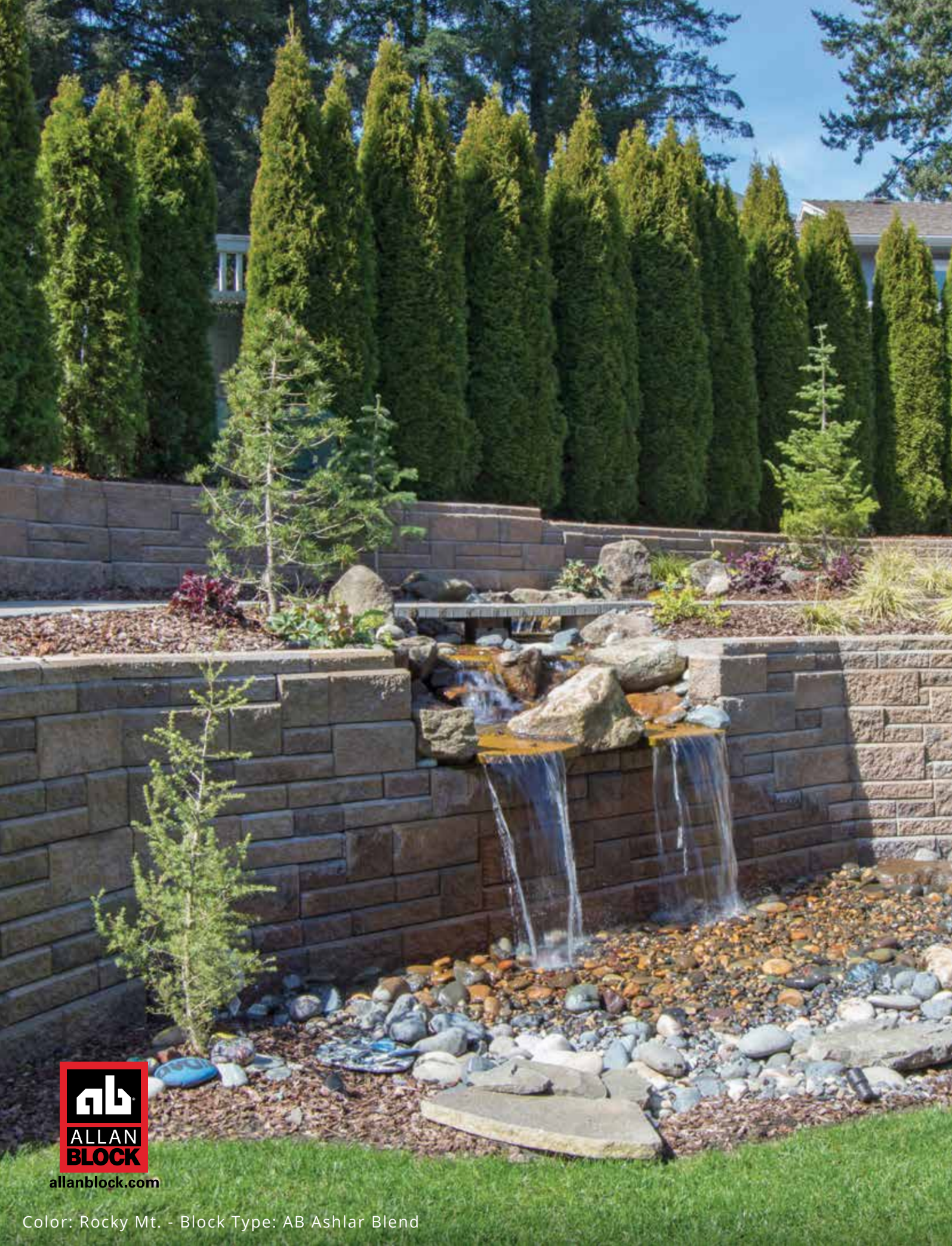
Finishing Sand

Spread and sweep dry sand over the top of the pavers and into the joints, and compact again until the joints are full. Add more sand and continue the process until a solid paver surface has been achieved. Do not vibrate within 3 ft. (1m) of the unrestrained edges of the paving units. Sweep off excess sand.



For additional installation information, product support and pattern ideas, please visit our website.

A Complete Family of Retaining Wall Products to Suit Your Taste & Lifestyle



Color: St. Helens - Block Type: Aztec Classics



Color: Charcoal - Block Type: AB Classics

Retaining walls are a necessity on sloping land. Whether you need a wall to give you more room in your backyard or a retaining wall to hold up a highway, Allan Block products can get it done. Allan Block products can build walls from under 1 foot tall to over 50 feet tall with proper engineering. Check your local codes for engineering and permit requirements. We offer many different finishes, colors and sizes of our retaining wall products.

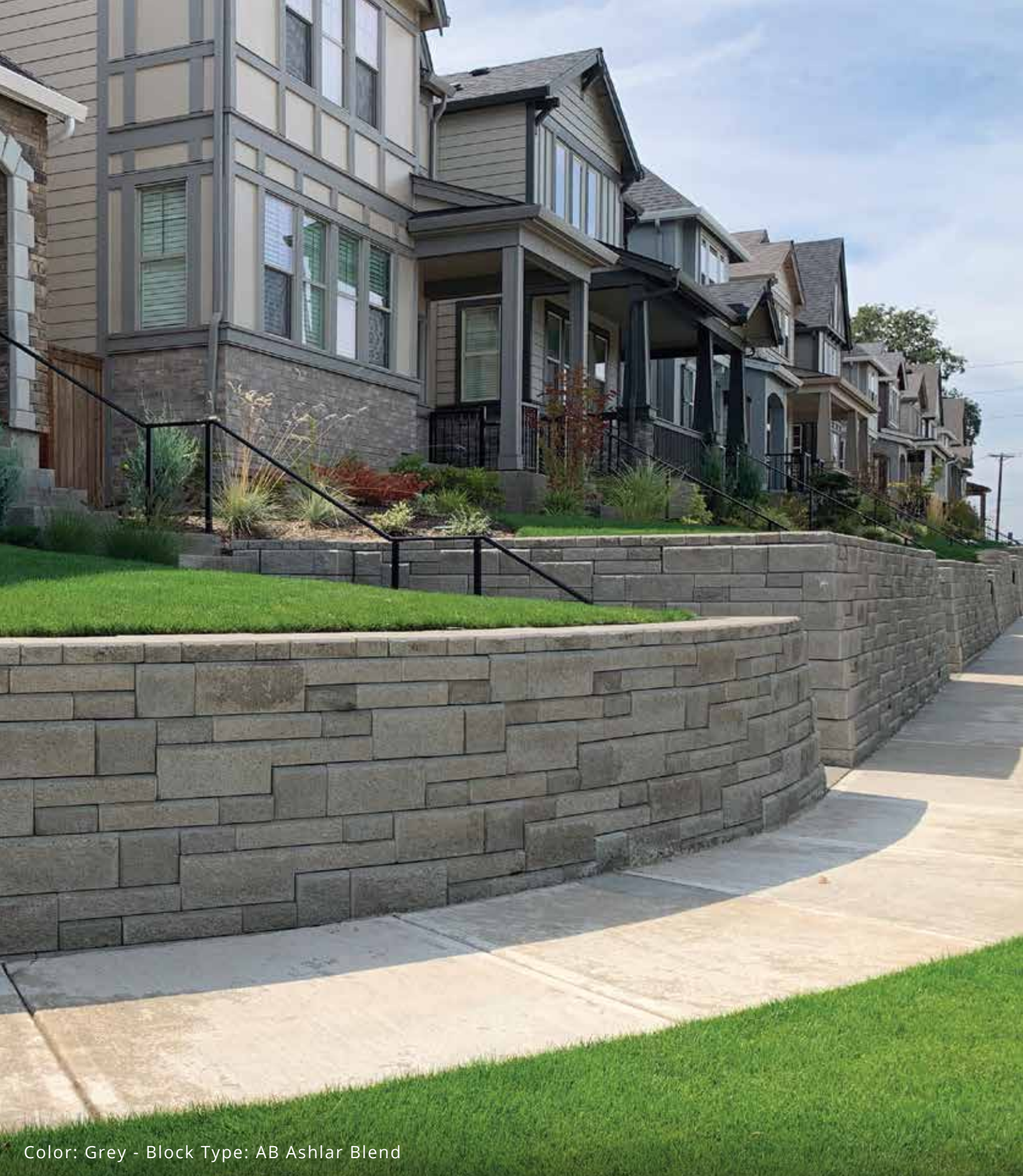


Color: St. Helens - Block Type: Aztec Blend



allanblock.com

Color: Rocky Mt. - Block Type: AB Ashlar Blend









Color: Grey - Block Type: AB Ashlar Blend

Elegant & Reliable

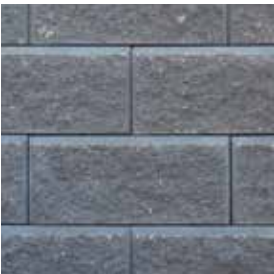
The AB® Collection is the perfect complement to Ashlar pavers. Our top retaining wall product, the simple clean lines of this collection capture the essence of traditional American cities, bringing elegance and classic beauty to any landscape.

Whether you're raising your garden or building a wall to create additional room in your yard, the AB® Collection fits together easily and lasts a lifetime.

	AB CLASSIC SETBACK: 6° WEIGHT: 80 lbs APPROXIMATE DIMENSIONS: 8" H x 12" D x 18" L Coverage: 1 sq ft		AB JUMBO JUNIOR SETBACK: 6° WEIGHT: 40 lbs APPROXIMATE DIMENSIONS: 8" H x 9.5" D x 9" L Coverage: .5 sq ft
	AB LITE STONE SETBACK: 6° WEIGHT: 40 lbs APPROXIMATE DIMENSIONS: 4" H x 12" D x 18" L Coverage: .5 sq ft		AB JUNIOR LITE SETBACK: 6° WEIGHT: 24 lbs APPROXIMATE DIMENSIONS: 4" H x 12" D x 9" L Coverage: .25 sq ft
	AB CORNERS WEIGHT: 60 lbs APPROXIMATE DIMENSIONS: 8" H x 8" D x 16" L		AB CAPS WEIGHT: 65 lbs APPROXIMATE DIMENSIONS: 4" H x 12" D x 18" L



Buckskin



Charcoal



Grey



St. Helens



Cascade



Rocky Mountain

AB Collection



Photos may not represent exact color of products. Please see samples at your local dealer before purchasing.



AB Ashlar Blend™ Pattern



allanblock.com

Simple Build

The blocks in the AB® Collection dry stack without mortar or footings, making installation easy. They can be built with one size, or using all four sizes creating what is called the Ashlar Pattern. We have pattern sheets to make estimating and install a breeze.

The hollow core feature means the blocks are easy to handle and are sure to drain properly. The raised lip and notch allow each block to lock in place and create a natural setback.

This AB® Collection works perfectly in residential or commercial settings for retaining walls of nearly any height, as tall as 50' and over.



Color: Cascade Blend - Block Type: AB Ashlar Blend



Color: Grey - Block Type: AB Classics

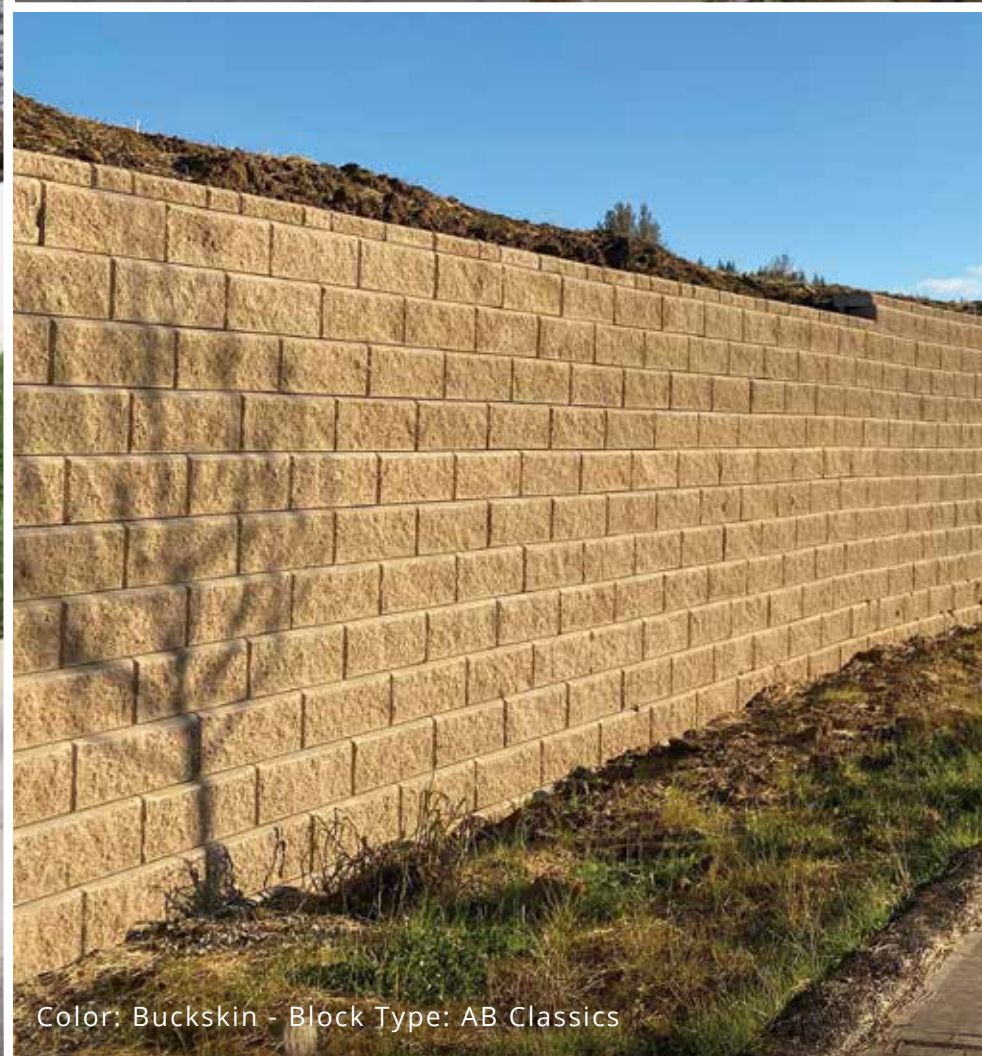
Color: Cascade Blend - Block Type: AB Ashlar Blend



Color: Buckskin - Block Type: AB Classics



Color: Charcoal - Block Type: AB Ashlar Bend



Color: Buckskin - Block Type: AB Classics

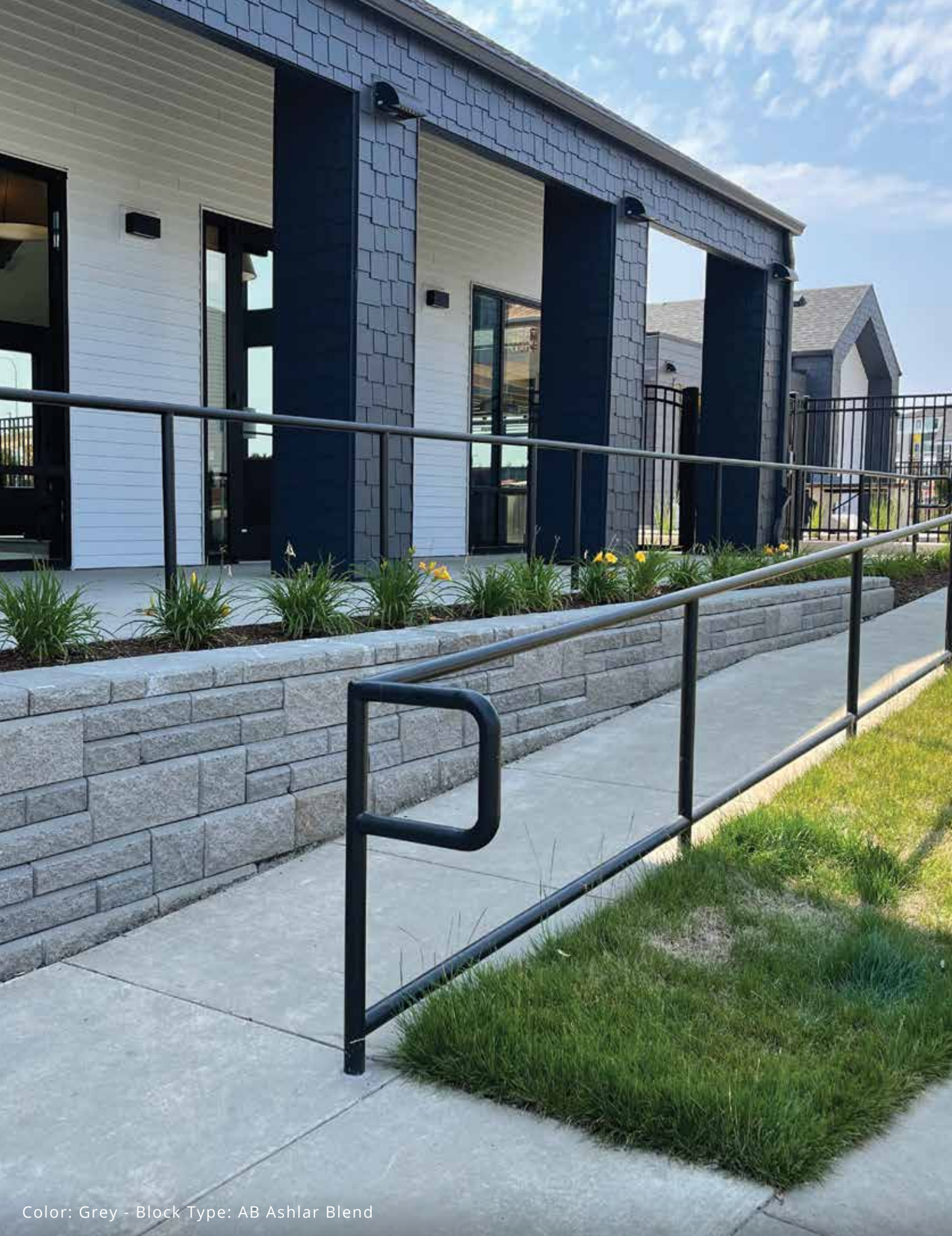


Color: St. Helens - Block Type: AB Ashlar Blend



Color: Grey - Block Type: AB Classics

Color: Rocky Mt. - Block Type: AB Classics



Color: Grey - Block Type: AB Ashlar Blend



Color: Rocky Mt. - Block Type: AB Ashlar Blend



Color: Grey - Block Type: AB Classics

Centuries Old Look

Inspired by the walls in Cusco, Peru, Capital of the Incans which are more than 500 years old. No need to learn the tricks of a new system, AB Aztec uses the same installation steps and engineering calculations as the AB and AB Europa Collections. The difference is in the smooth, molded face that is subtle but impressive. With a more modern look this is an option for people who don't like the split face look of other block but want to remain in a tighter budget.



AB AZTEC CLASSIC

SETBACK: 6°

WEIGHT: 75 lbs

APPROXIMATE DIMENSIONS:
8" H x 12" D x 18" L

Coverage:
1 sq ft



AB AZTEC LITE STONE

SETBACK: 6°

WEIGHT: 35 lbs

APPROXIMATE DIMENSIONS:
4" H x 12" D x 18" L

Coverage:
.5 sq ft



AB AZTEC CORNER

WEIGHT: 50 lbs

APPROXIMATE DIMENSIONS:
8" H x 8" D x 16" L



AB AZTEC JUMBO JUNIOR

SETBACK: 6°

WEIGHT: 35 lbs

APPROXIMATE DIMENSIONS:
8" H x 9.5" D x 9" L

Coverage:
.5 sq ft



AB AZTEC JUNIOR LITE

SETBACK: 6°

WEIGHT: 18 lbs

APPROXIMATE DIMENSIONS:
4" H x 12" D x 9" L

Coverage:
.25 sq ft



AB AZTEC CAP

WEIGHT: 65 lbs

APPROXIMATE DIMENSIONS:
4" H x 11" D x 18" L



Color: St. Helens
Block Type: Aztec Blend



Rocky Mountain



St. Helens

Color: St. Helens - Block Type: Aztec Classics

AB Aztec Collection



AB Aztec™ Blend Pattern



allanblock.com

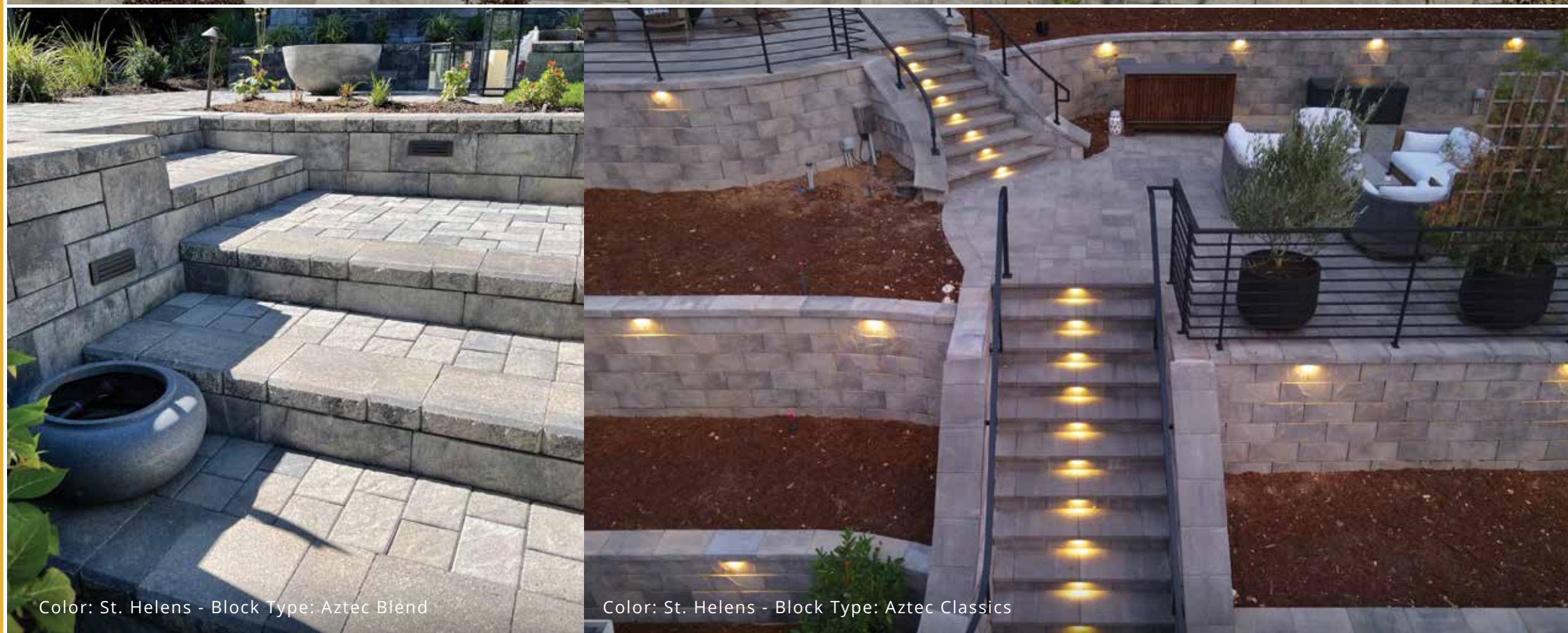
Simple Build

The AB Aztec™ Collection is easy to install. These blocks dry-stack without mortar or footings. The hollow core feature makes them easier to handle and promotes good drainage behind the wall. The raised lip and notch lock each block in place and creates a natural setback. Use one block size or mix the different block sizes together in the wall to create a beautiful pattern. The AB Aztec™ Collection is right at home in residential settings where retaining walls 6' and under are typically called for, and up to the task on larger retaining walls 6' and over.

With this collection you can use one size, or use all four to create an AB Aztec™ Blend Pattern.



Color: St. Helens - Block Type: Aztec Blend



Color: St. Helens - Block Type: Aztec Blend

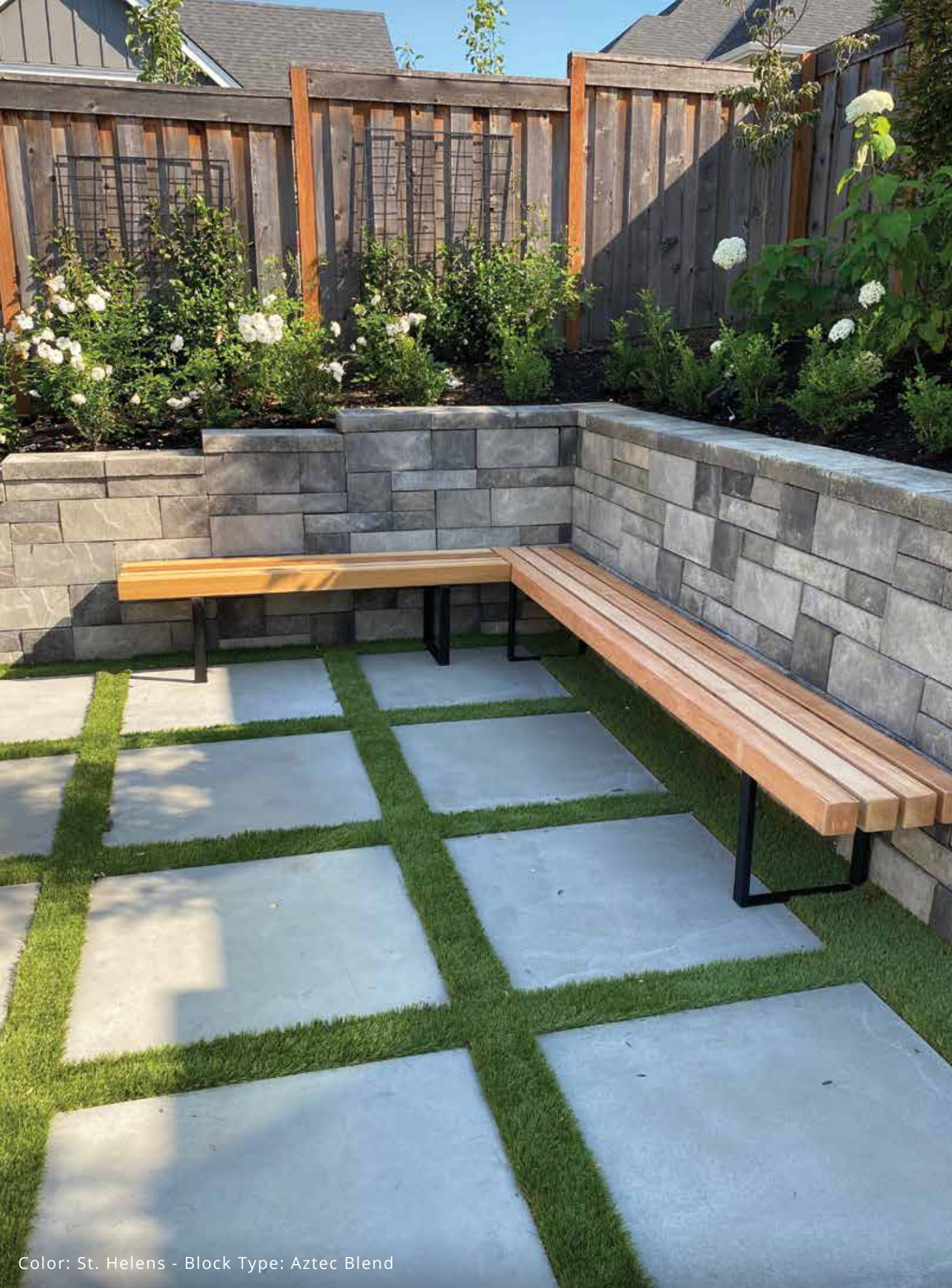
Color: St. Helens - Block Type: Aztec Classics



Color: Rocky Mt. - Block Type: Aztec Classics



Color: St. Helens - Block Type: Aztec Blend



Color: St. Helens - Block Type: Aztec Blend



Color: St. Helens - Block Type: Aztec Classics



Color: St. Helens - Block Type: Aztec Blend



Color: St. Helens - Block Type: Metro Classics

Architectural Look & Style

Minimalistic aesthetics and smooth clean lines, the AB Metropolitan line of blocks main focus is on functionality. This mid-century modern style will offer the same dependable Allan Block system in this brand new look.



AB METRO CLASSIC
SETBACK: 6°
WEIGHT: 75 lbs

APPROXIMATE DIMENSIONS:
8" H x 12" D x 18" L
Coverage:
1 sq ft



AB METRO CORNER
WEIGHT: 50 lbs
APPROXIMATE DIMENSIONS:
8" H x 8" D x 16" L



AB METRO CAP
WEIGHT: 55 lbs
APPROXIMATE DIMENSIONS:
4" H x 11" D x 18" L



St. Helens Blend



Rocky Mountain

Photos may not represent exact color of products. Please see samples at your local dealer before purchasing.



Color: Rocky Mt. - Block Type: Metro Classics

AB Metro Collection



Features

- Clean New Look – Same Great Reliability
- Minimalistic style with smooth face
- Can be integrated with other collections
- Same easy installation process
- Affordable solution for any scale project

The AB Metropolitan Collection is easy to install. These blocks dry-stack without mortar or footings. The hollow core feature makes them easier to handle and promotes good drainage behind the wall. The raised lip and notch lock each block in place and creates a natural setback. The AB Metropolitan Collection is right at home in residential settings where retaining walls 6ft (1.8 m) and under are typically called for, and up to the task on larger retaining walls 6ft (1.8 m) and over.



Color: St. Helens - Block Type: Metro Classics

Color: St. Helens - Block Type: Metro Classics



Color: Rocky Mt. - Block Type: Abbey Blend

Bring the Past to the Present

Travel back in time to the boulevards of Paris and the hill towns of Italy when stone laid beautifully through the streets. The AB Europa Collection creates the same hand laid stone effect of Europe's old world charm and distinction to any retaining wall project. Create your masterpiece with the AB Europa Collection this year.



AB DOVER
SETBACK: 6°
WEIGHT: 85 lbs
APPROXIMATE DIMENSIONS:
8" H x 10.5" D x 18" L
Coverage:
1 sq ft



AB BARCELONA
SETBACK: 6°
WEIGHT: 45 lbs
APPROXIMATE DIMENSIONS:
4" H x 10.5" D x 18" L
Coverage:
.5 sq ft



AB EUROPA CORNER
WEIGHT: 90 lbs
APPROXIMATE DIMENSIONS:
8" H x 8", D x 16" L



AB PALERMO
SETBACK: 6°
WEIGHT: 40 lbs
APPROXIMATE DIMENSIONS:
8" H x 9.5" D x 9" L
Coverage:
.5 sq ft



AB BORDEAUX
SETBACK: 6°
WEIGHT: 23 lbs
APPROXIMATE DIMENSIONS:
4" H x 10.5" D x 9" L
Coverage:
.25 sq ft



AB EUROPA CAP
WEIGHT: 67 lbs
APPROXIMATE DIMENSIONS:
4" H x 11" D x 18" L



Color: Rocky Mt. - Block Type: Abbey Blend



Rocky Mountain



St. Helens (coming summer 2023)

AB Europa Collection

Photos may not represent exact color of products. Please see samples at your local dealer before purchasing.




Color: St. Helens

AB Courtyard Collection

Building Blocks for Outdoors


Create an outdoor space designed with your comfort and style in mind. Our versatile block system provides unlimited possibilities. Incorporate custom gates, countertops, natural stone, or pavers as beautiful accents. Choose between two textures and create a pattern with the different block shapes to find a unique look that endures the test of time



AB DUBLIN
WEIGHT: 39 lbs
APPROXIMATE DIMENSIONS:
16.5" L x 7" D x 6" H



AB WALL CAP
WEIGHT: 22 lbs
APPROXIMATE DIMENSIONS:
9.25" L x 7.25" L x 10" D x 3.5" H



AB CORNER
WEIGHT: 42 lbs
APPROXIMATE DIMENSIONS:
15.5" L x 14.75" L x 7" D x 6" H



AB POST CAP
WEIGHT: 70 lbs
APPROXIMATE DIMENSIONS:
24" L x 12" D x 3.5" H



AB YORK
WEIGHT: 20 lbs
APPROXIMATE DIMENSIONS:
9" L x 7.5" L x 7" D x 6" H



Color: St. Helens



St. Helens



Rocky Mountain



Cascade Blend



Photos may not represent exact color of products. Please see samples at your local dealer before purchasing.



allanblock.com

An Interlocking Dream

The AB Dublin Block comes in left and right angles. The two raised rings on the top of the block allow you to lock the blocks in place.

Tapered Perfection

The AB York block's tapered design allows you to create curved walls easily. With a long and short side, you only need to rotate every other block to get your desired structure.

Easy Design. Easy Installation.

The AB Corner block's angled construction eliminates the need for you to figure out the designated top or bottom; flipping it over creates the opposite angle.

Finishing Touches

Use AB Caps to finish off any AB Courtyard® Collection project. Use wall caps to finish the top of a wall panel and post caps to finish the top of a post or pillar. Secure them in place with a masonry adhesive.



Color: St. Helens



Color: Rocky Mt.

Color: Cascade Blend

Building Blocks for Outdoors

The AB Metro Patio Wall System encapsulates outdoor living at it's finest. Build that dream addition to your home that cultivates a luxurious, sleek, and inviting atmosphere. Whether the desire is to entertain, cook, or relax, there are several pre-designed rooms and elements to fit into your every desire.

No matter which application you desire to build, the AB Metro Patio Wall System has been designed to eliminate any potential roadblocks with installation. Each block size — the AB Metro 8, AB Metro 16 and AB Metro 24 — are packaged as a set, allowing for ease in installation methods. Straight walls and 90-degree corners pave the way to effortless construction, and no cutting necessary. Finish off your look with the AB Metro Capper to transform your outdoor living experience from conventional to extraordinary.



AB Metro 8

WEIGHT: 20 lbs

APPROXIMATE DIMENSIONS:
8" L x 8" D x 6" H



AB Metro 24

WEIGHT: 60 lbs

APPROXIMATE DIMENSIONS:
24" L x 8" W x 6" H



AB Metro 16

WEIGHT: 40 lbs

APPROXIMATE DIMENSIONS:
16" L x 8" W x 6" H



AB Metro Capper

WEIGHT: 50 lbs

APPROXIMATE DIMENSIONS:
18" L x 11" W x 3" H



Color: Rocky Mt.



St. Helens Blend

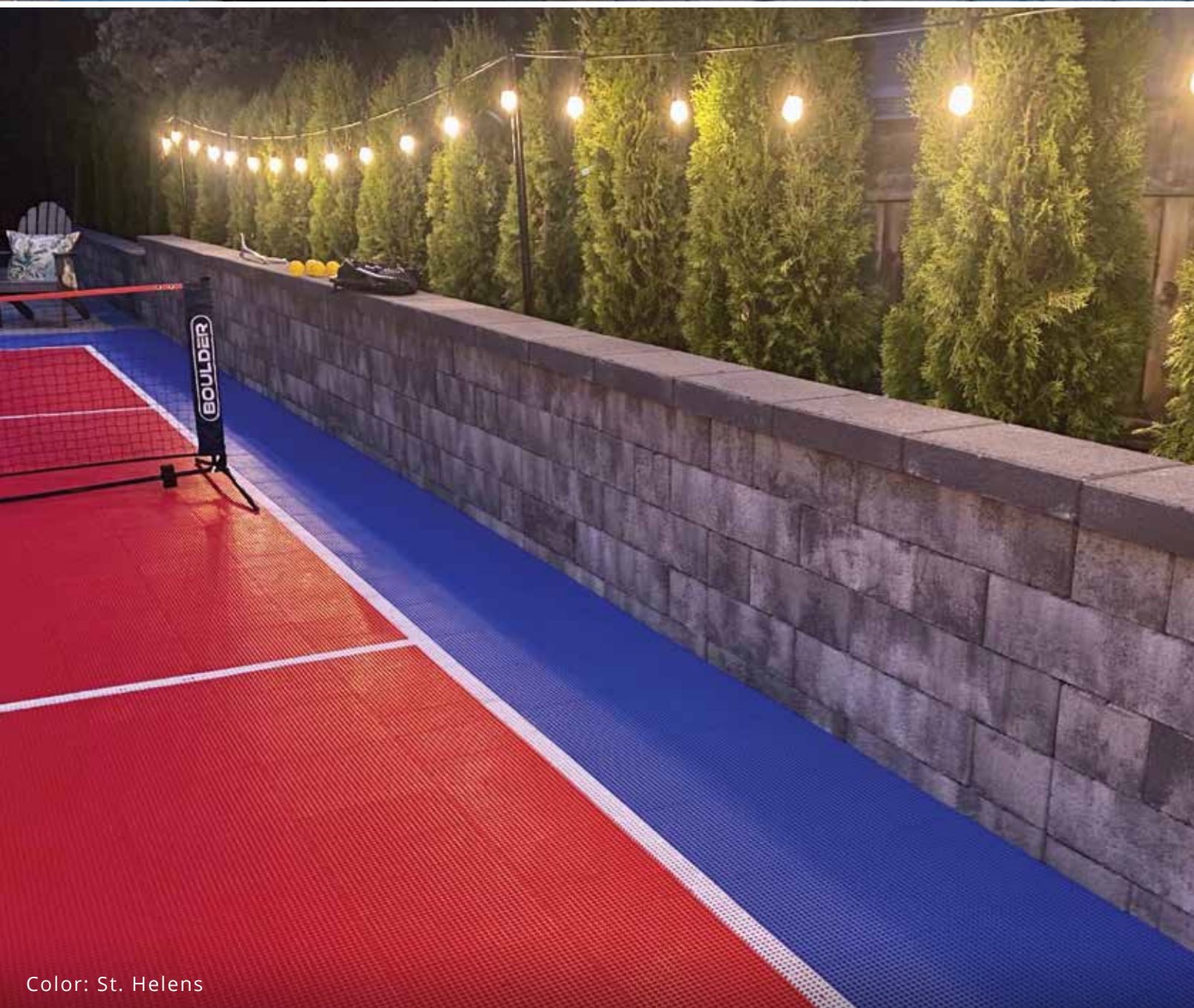


Rocky Mountain

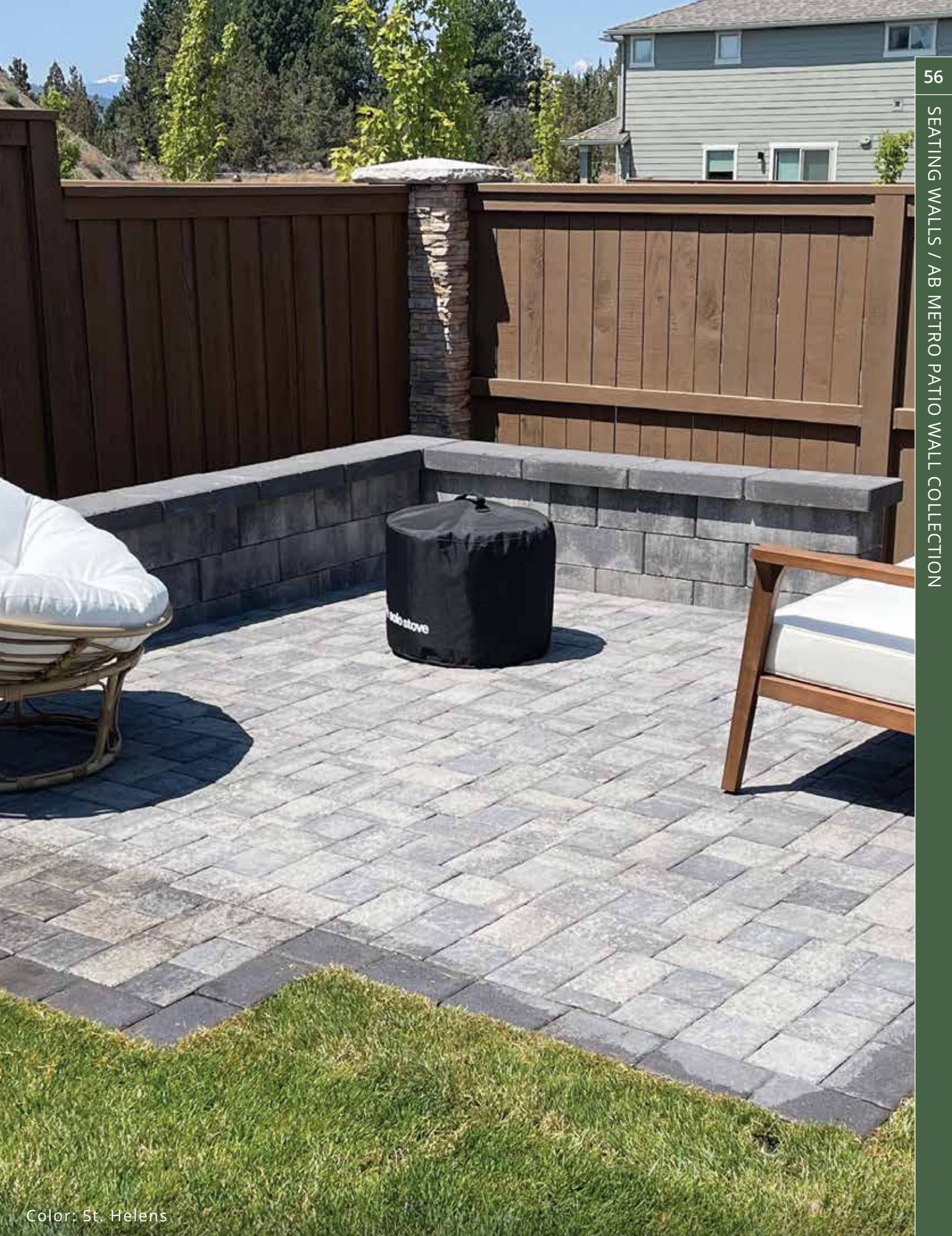
AB Metro Patio Wall Collection



Color: Rocky Mt.



Color: St. Helens



Color: St. Helens

Need additional planning support?

Visit our website at OregonBlock.com
or call us at 541.447.6869.

Frequent Questions

How tall can I build an Allan Block wall?

Unreinforced Allan Block walls or gravity walls, can be built up to 5 ft high in sandy soils and up to 3.5 ft in clay soils. Follow the Allan Block Installation Guide for easy installation instructions. Geogrid reinforcement can support walls in excess of 40 feet high. Always consult an engineer on a job of this scale.

Do I need a concrete base for my retaining wall?

No. Allan Block walls are designed to sit on a compacted granular base. This saves time and money, while providing a solid base for the blocks. See the Allan Block Retaining Wall Guide for the recommended depth and width of base for your wall.

Do I need a permit to do a retaining wall?

Most counties require a building permit if your retaining wall is taller than 3-4 feet. Please consult your local building department before starting your project.

Can I plant a garden or grass behind my wall?

Yes. Planting or landscaping in the block cores or behind the blocks is easy and environmentally safe. Allan Block does not leach any harmful chemicals that could affect your plants or shrubs. A drip irrigation system can even be built into the wall during construction.

What base material should be used on my wall?

A good base material is a crushed stone 1/4" to 3/4" in size. This material compacts well and makes it easy to level the base block.

How high can I go before backfilling?

Backfill every row of block you stack – and check your wall for level at the same time. Backfilling more than one row at a time may cause the wall to lean forward. Make sure to compact every layer of block as well with a walk behind vibratory plate compactor.

Do I need an engineer?

Generally, Allan Block recommends the use of a licensed engineer on projects with taller walls or unusual site conditions. Local building codes may require the use of a licensed engineer for walls above a certain height. Our design charts and tables provide generalized engineering solutions. Each retaining wall site is unique, however, and specific evaluation will provide the most accurate solution.

Would it be better to mortar the pavers into place?

No. Setting the pavers in wet mortar or concrete eliminates the flexibility and superiority of sand-set installation and will prevent interlocking.

Why are some of my pavers scuffed?

Pavers become scratched and scuffed, or "bruised", in many ways before and during installation. These marks are normal and will disappear over time. Common causes are abrasion during transportation, handling scratches during placement, and scuffing during the vibration compaction process. The vibration compaction process is likely the most stress the pavers will ever see.

Do I need to seal Oregon Block pavers?

Sealing is optional, but sealing the pavers does have some advantages. Sealing your pavers can:

- Make cleanup of oil, food, or vegetation stains easier
- Help prevent vegetation growth
- Help stabilize the joint sand and prevent it from being washed out by rain or heavy cleaning
- Intensify color characteristics

You can seal your pavers immediately after completion of installation or at any time in the future, provided the pavers are clean and the weather is dry. Although pavers may appear dry on the surface, it is very important to wait the prescribed drying time before applying the sealer.



Oregon Block is located in Prineville, Oregon and serves the entire Oregon and SW Washington regions. Our network of dealers throughout the area are easily accessible and ready to help with your next project. Visit our website or contact us directly to find a dealer near you.

1763 NW Gardner Rd.
Prineville, OR 97754

541.447.6869
info@oregonblock.com

OregonBlock.com



allanblock.com

Oregon Block is a licensed manufacture of Allan Block. For more information on licenses and manufacturing information visit www.allanblock.com.



Color: Grey - Block Type: AB Classics